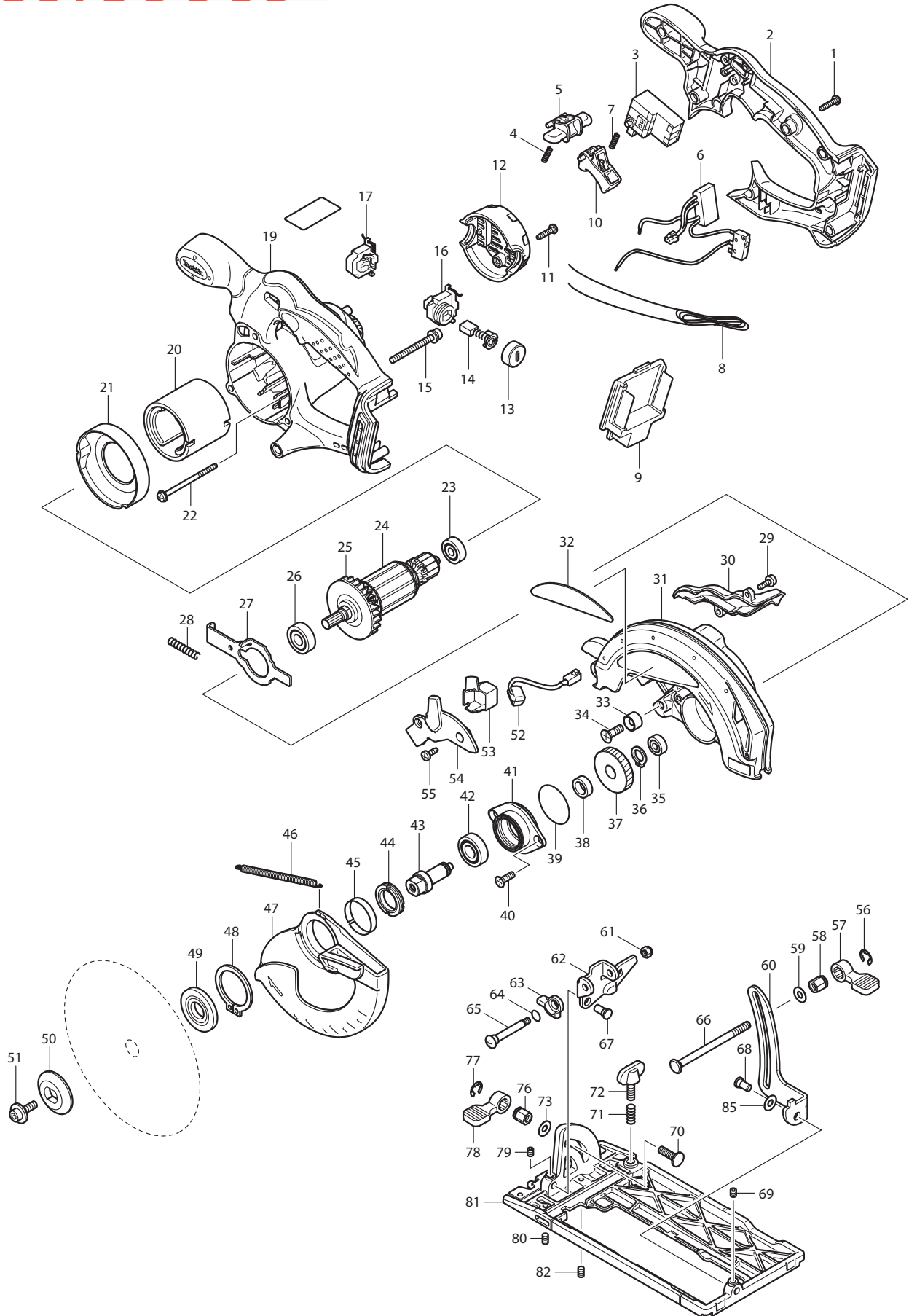




09 - 2011
BSS610 / BSS610Z / BSS610X2 / BSS610F
18V 6-1/2" CIRCULAR SAW



Item No	Type	Ref	Part No	Description	Qty	Unit
1			265995-6	TAPPING SCREW 4X18	6	PC.
2	1		419279-6	* HANDLE COVER	1	PC.
	2		141470-5	* HANDLE COVER COMPLETE	1	PC.
3	1		651956-6	* SWITCH TG72BD	1	PC.
	2		650631-1	* SWITCH	1	PC.
4			231469-9	COMPRESSION SPRING 4	1	PC.
5			419322-1	LOCK OFF LEVER	1	PC.
6	1		631695-4	* POWER SUPPLY CIRCUIT	1	PC.
	2		620088-0	* POWER SUPPLY CIRCUIT	1	PC.
7			231469-9	COMPRESSION SPRING 4	1	PC.
8	1		638432-7	* LEAD UNIT (TYPE 1 ONLY)	1	PC.
9	1		643812-4	* TERMINAL, BLACK	1	PC.
	2		643838-6	* TERMINAL	1	PC.
	3		643859-8	* TERMINAL	1	PC.
10			419176-6	SWITCH LEVER	1	PC.
11			265995-6	TAPPING SCREW 4X18	2	PC.
12			419281-9	REAR COVER	1	PC.
13			643941-3	BRUSH HOLDER CAP	2	PC.
14	2		194435-6	CARBON BRUSH CB-441 2PC/SET (W/O ORIGIN) - N/L/A	1	SET
	3		195022-4	CARBON BRUSH CB-441, 2PCS/SET, W/ORIGIN	1	SET
15			911263-2	PAN HEAD SCREW M5X40	3	PC.
16	1		643814-0	* BRUSH HOLDER	1	PC.
	2		643895-4	* BRUSH HOLDER	1	PC.
17	1		643813-2	* BRUSH HOLDER	1	PC.
	2		643896-2	* BRUSH HOLDER	1	PC.
19	1		419278-8	* MOTOR HOUSING	1	PC.
	3		141559-9	* MOTOR HOUSING COMPLETE	1	PC.
20			638107-8	YOKE UNIT	1	PC.
21			419285-1	BAFFLE PLATE	1	PC.
22			266292-3	TAPPING SCREW 4X65	2	PC.
23			210023-2	BALL BEARING 627DDW	1	PC.
		INC.	*****	Item No. 23, 25, 26	1	PC.
24			519173-3	ARMATURE ASS'Y 18V	1	PC.
25			241869-5	FAN 55	1	PC.
26			211061-7	BALL BEARING 6000LLB	1	PC.
27	1		345659-9	SHAFT LOCK 102MM	1	PC.
	2		346059-6	SHAFT LOCK 104MM	1	PC.
28			233092-6	COMPRESSION SPRING 5	1	PC.
29			911118-1	PAN HEAD SCREW M4X12	2	PC.
30			419284-3	BLOWER NOZZLE	1	PC.
		INC.	213434-0	O RING 26	1	PC.
		INC.	816847-0	OPERATIONAL INDICATION LABEL (OLD)	1	PC.
		INC.		Item No. 32	1	PC.
31			188045-9	BLADE CASE SET	1	PC.
32			819217-2	MAKITA LOGO PLATE	1	PC.
33			262049-0	RUBBER RING 6	1	PC.
34			251368-9	+ COUNTERSUNK SCREW M6	1	PC.
35			210028-2	BALL BEARING 606ZZ	1	PC.
36			961052-5	RETAINING RING S-12	1	PC.
37			227156-6	SPUR GEAR 52	1	PC.
38			257173-2	RING 12	1	PC.
39			213512-6	O RING 39	1	PC.
40			265034-2	+ COUNTERSUNK HEAD SCREW M5X16	2	PC.
41			318009-1	BEARING BOX	1	PC.
42			211131-2	BALL BEARING 6001DDW	1	PC.
43			324626-7	SPINDLE	1	PC.
44			285845-9	BEARING RETAINER 19-29	1	PC.

Item No	Type	Ref	Part No	Description	Qty	Unit
45			345469-4	THICKNESS RING	1	PC.
46			231821-1	TENSION SPRING 3	1	PC.
47			419280-1	SAFETY COVER	1	PC.
48			961152-1	RETAINING RING (EXT) S-34	1	PC.
49			224151-7	INNER FLANGE 40	1	PC.
50			224275-9	OUTER FLANGE 40	1	PC.
51			266133-3	HEX. SOCKET HEAD BOLT M6X20	1	PC.
52			631694-6	LED CIRCUIT	1	PC.
53			419341-7	CONNECTOR BOX	1	PC.
54			419282-7	LIGHT COVER	1	PC.
55			266026-4	TAPPING SCREW BIND CT 4X12	2	PC.
56			961014-3	STOP RING E-8	1	PC.
57			272229-0	LEVER 40	1	PC.
58			252158-3	HEX.NUT M6	1	PC.
59			941151-9	FLAT WASHER 6	1	PC.
60			345658-1	DEPTH GUIDE	1	PC.
61			252103-8	HEX. LOCK NUT M5-8	1	PC.
62			345657-3	ANGULAR GUIDE	1	PC.
63			317986-4	STOPPER	1	PC.
64			213062-1	O RING 9	1	PC.
65			265084-7	+ TRUSS HEAD SCREW M5	1	PC.
66			266194-3	FLAT HEAD SCREW M6X90	1	PC.
67	1		256442-8	SHOULDER PIN 6-7	1	PC.
	2		256480-0	SHOULDER PIN 6-7	1	PC.
68	1		256442-8	SHOULDER PIN 6-7	1	PC.
	2		256480-0	SHOULDER PIN 6-7	1	PC.
69			266264-8	HEX. SOCKET HEAD SCREW M5X6	1	PC.
70			251919-8	CAP SQUARE NECK BOLT M6X20	1	PC.
71			231007-7	COMPRESSION SPRING 6	1	PC.
72			251896-4	SCREW M5X20	1	PC.
73			941151-9	FLAT WASHER 6	1	PC.
76			252133-9	HEX. NUT M6	1	PC.
77			961014-3	STOP RING E-8	1	PC.
78			272251-7	LEVER 30	1	PC.
79			266264-8	HEX. SOCKET HEAD SCREW M5X6	1	PC.
80			266229-0	HEX. SOCKET SET SCREW M5X8	1	PC.
		INC.	816850-1	SCALE PLATE	1	PC.
81			154831-0	BASE COMPLETE	1	PC.
82			266229-0	HEX. SOCKET SET SCREW M5X8	1	PC.
85			253186-1	FLAT WASHER 7 (ADDED)	1	PC.
E01			620087-2	* CONTROLLER (Added)	1	PC.

ACCESSORIES

- See Catalogue or visit www.makita.ca for more accessories information -

A01			164095-8	GUIDE RULE	1	PC.
A02	1		DC18RA	CHARGER DC18RA	1	PC.
	2		DC18RC	CHARGER DC18RC	1	PC.
			DC18SD	CHARGER DC18SD	1	PC.
			DC18SE	AUTOMOTIVE CHARGER DC18SE	1	PC.
			DC18RAKIT	CHARGER + BATTERY (DC18RA+BL1830)	1	SET
			DC24SC	CHARGER F/ 7.2-24V, 1.3-3.3AH BATTERY	1	PC.
A03			194230-4	18V LI-ION BATTERY BL1830 (3.0AH), 2/PK	1	SET
			194288-3	18V LI-ION BATTERY BL1830 (3.0AH), 10/PK	1	SET
			194205-3	18V LI-ION BATTERY BL1830	2	PC.
A04			783203-8	HEX. WRENCH 5	1	PC.
A05	1		824757-7	PLASTIC CARRYING CASE	1	PC.
		INC.	419360-3	HANDLE	1	PC.
		INC.	163455-1	LATCH	2	PC.

Item No	Type	Ref	Part No	Description	Qty	Unit
	2		141353-9	PLASTIC CARRYING CASE	1	PC.
		INC.	419360-3	HANDLE	1	PC.
		INC.	163455-1	LATCH	2	PC.
A06			A-85092	6-1/2" C.T.SAW BLADE 24T (5/8")	1	PC.
A07			P-80012	DUST NOZZLE	1	PC.
A08			194649-7	BATTERY PROTECTOR (F/BL1430, BL1830)	1	PC.
A09			450128-8	BATTERY COVER (F/LI-ION)	1	PC.

SERVICE CHANGES**1. Changes on Switch, Terminal and Housing Set (Battery Protection Circuit)**

(T/I#84907, 75667)

(T/I# 93377)

Item No.	Description	Type 1	Type 2	Type 3
17	Brush Holder		643812-2	643896-2
16	Brush Holder		643814-0	643895-4
3	Switch		651956-6	650631-1
6	Power supply circuit		631695-4	620088-0
8	Lead Unit		638432-7	-----
9	Terminal	643812-4	643838-6	643859-8
2	Handle Cover		419279-6	141470-5
19	Motor Housing Complete	419278-8	158074-6 (N/A)	141559-9
E01	Controller	---	---	620087-2

Above parts are completely interchangeable as a set.

Service Note:

- Use TYPE 3 for repair of the model manufactured on or after December 2011 with using Yellow lead wire between Switch and Terminal.
- Use TYPE 2 (or TYPE 1) for repair of the model manufactured before December 2011 without using Yellow lead wire between Switch and Terminal.

**** See Technical Information #93377 for Wiring Diagram Change**